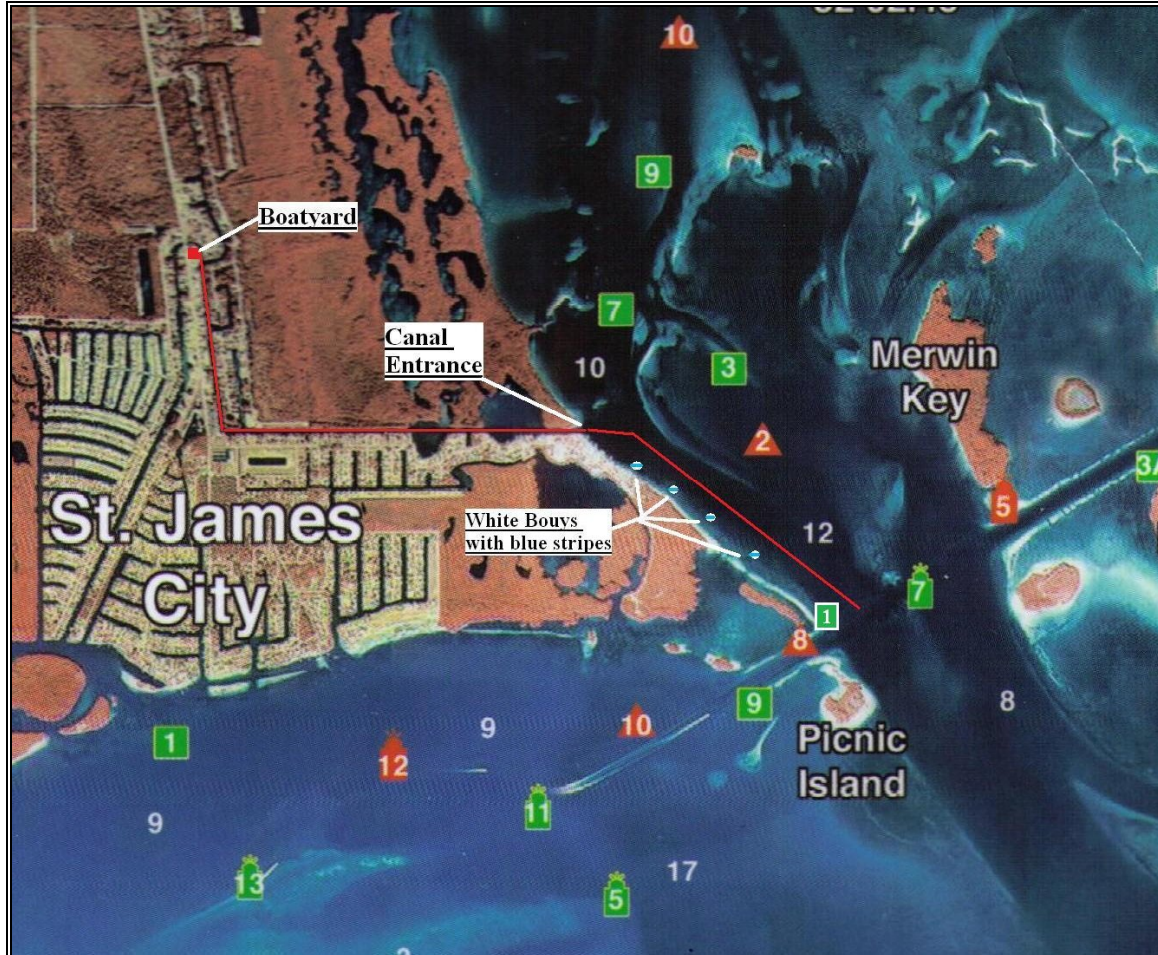




3420 Stringfellow Road St. James City, FL 33956

Directions to the Boatyard



By Water

Latitude 26.30.612' N Longitude 082.04.975' W

On the intercoastal waterway head to green marker 1.
This is the beginning of Matlacha Pass.

On the Eastside of Saint James City, there will be 4 white and blue striped buoys; they are running parallel with the shoreline.

Keeping the buoys to the West, follow them to the Canal entrance.

Bob and Annie's Boatyard is down this canal about a quarter of a mile; look for the cranes and all the boats! You'll know it when you see it.

Phone: (239) 283-3962 Fax: (239) 283-4210
www.bobandannies.com